

# Attaché PRO Archiver

## The easy way to protect your Attaché PRO data

It's no secret that keeping a separate, up-to-date backup\* of your data is critical. Attaché PRO Archiver is designed to compliment your existing backup routine.

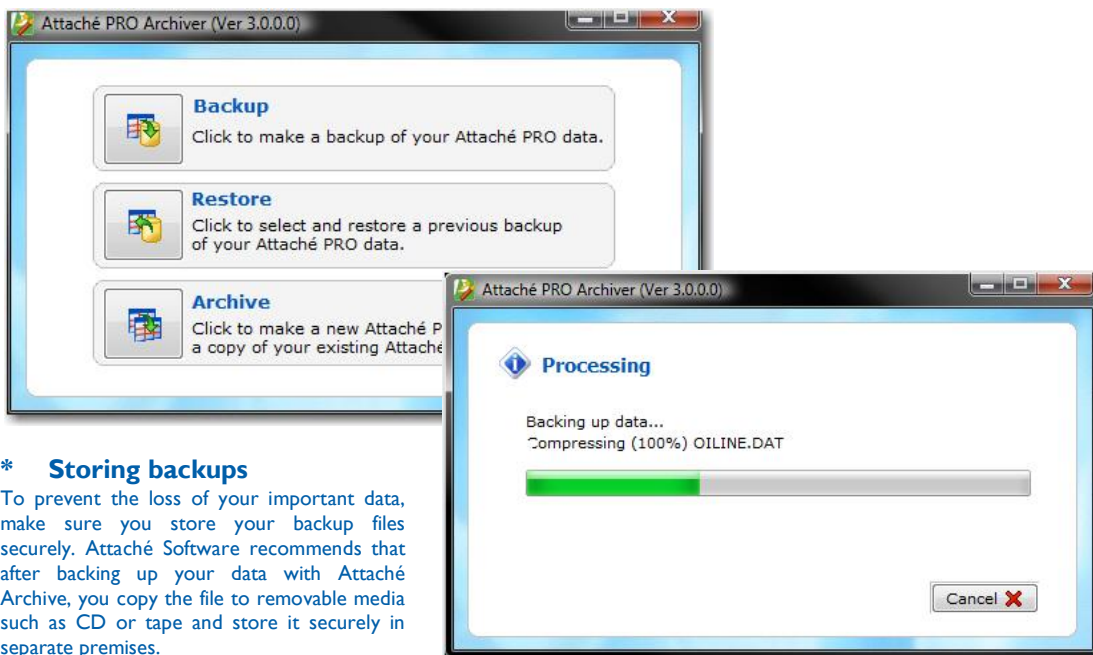
Typically backup of accounting data is made at various stages. Attaché PRO Archiver lets you easily create an archive or restore a single company -- at anytime -- without backing up or restoring your whole system. Even more importantly, if you do want to restore, you don't have to wait for the technician to find your data in a maze of other files or restore the whole system just to restore one company.

### Key benefits

Attaché PRO Archiver is a purpose-built tool designed to keep your Attaché PRO data safe. It simplifies the task, and eliminates problems caused by staff changes, simply forgetting or being "too busy".

Benefits include:

- ease and accuracy of full integration
- never-forget prompting plus on-demand
- super efficient, fast process
- archive copy of data at year end



### \* Storing backups

To prevent the loss of your important data, make sure you store your backup files securely. Attaché Software recommends that after backing up your data with Attaché Archive, you copy the file to removable media such as CD or tape and store it securely in separate premises.

## Fully integrated

Keeping things simple is the key. Attaché PRO Archiver comes preconfigured to ensure it only copies the required files and, importantly, ignores files it shouldn't copy, such as temporary Alex document files.

So that all operators can create backups, Attaché PRO Archiver stores backups in a pre-determined place on your system.

Restoring data is as simple as "point and click". Your archives can be easily sorted by date and time so it's to find the most recent copy.

## Automated prompting and on-demand

Attaché PRO Archiver is a built-in process performed with your normal daily processing. When a user performs key functions such as Month End or Post Invoices, they are prompted to backup the data, so creating a backup can never be forgotten. Simply answer Yes when prompted and it's done.

System Administrators can also elect to create a backup at any time, provided no one else is using the company data. You can even use the Attaché PRO scheduler to perform a backup after hours.

## Super efficient

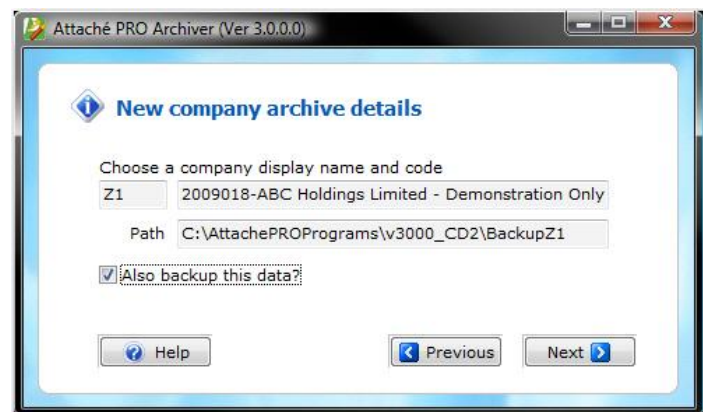
It takes just seconds to create a backup. Restoring is even faster. To save space, the data is compressed into a zip file to a fraction of its normal size.

You can see the archive being created — the files are displayed as they quickly scroll through. The only limit to the number of backups is your hard disk capacity, so there is no harm in creating multiple backups during the day if you wish.

Managing the backups is no different to managing any other files on your system. You can easily access them using Windows Explorer to copy them to a CD or other device, or delete them when they are no longer required.

## Archive as well as backup

When it comes to the Year End, typically users want a copy of the data to refer to in the pre 'year-end' state. Here the Archive function comes into its own. Archive allows you to make a copy of the data and attach this as a new Attaché PRO company in one easy to use process. You can even take a backup at the same time!



General Ledger  
Cashbook  
Accounts Receivable  
Accounts Payable  
Inventory Control  
Special Pricing  
Fixed Assets  
Bill of Materials  
Sales Order Entry  
Sales Analysis  
Purchase Ordering  
Purchase Analysis  
Foreign Currency  
Payroll  
Alex  
Report Designer  
Data Transfer  
FlexiData  
ODBC  
OLE DB  
Archiver  
Scheduling



**Attaché Software New Zealand Pty. Limited**  
Level 5, 93 Grafton Road, Parnell, Auckland  
PO Box 37-623, Parnell, Auckland  
Tel + 64 9 302 9390  
Fax + 64 9 302 9391

**Attaché Software Australia Pty. Limited**  
18 Berry Street, North Sydney NSW 2060  
PO Box 1070, North Sydney NSW 2059  
Tel + 61 2 9929 8700  
Fax + 61 2 9925 0481

Email [sales@attache.co.nz](mailto:sales@attache.co.nz)  
Website [www.attachepro.com](http://www.attachepro.com)