

# Fixed Assets

## Management of Fixed Assets that is both integrated and automated.

Managing Assets and calculating depreciation can be a complex and daunting task. Many people have tried to use spreadsheets but as the Asset register grows, so does the pain. Take that pain away with the Attaché PRO Fixed Assets module. Management of assets is simple and calculation of depreciation is automated. With extensive reporting this module will equip you with the business tools you need to take control of your Asset management.

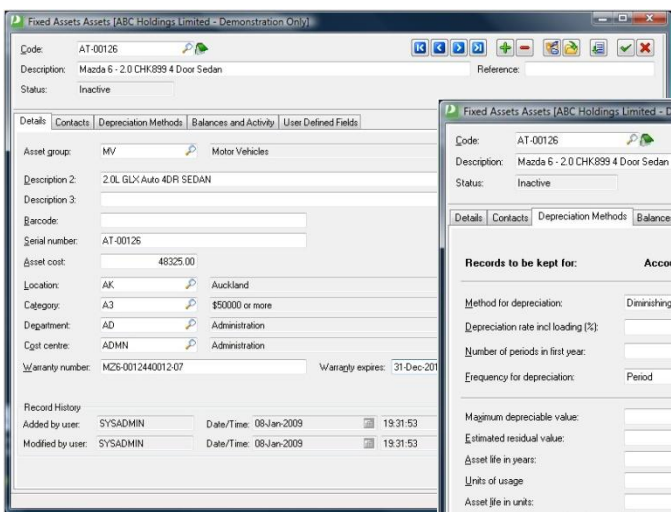
### Key benefits

Attaché PRO Fixed Assets has the business logic built into it, so you don't need to remember how to apply complex depreciation calculations for each Asset. The comprehensive functions for managing Assets include:

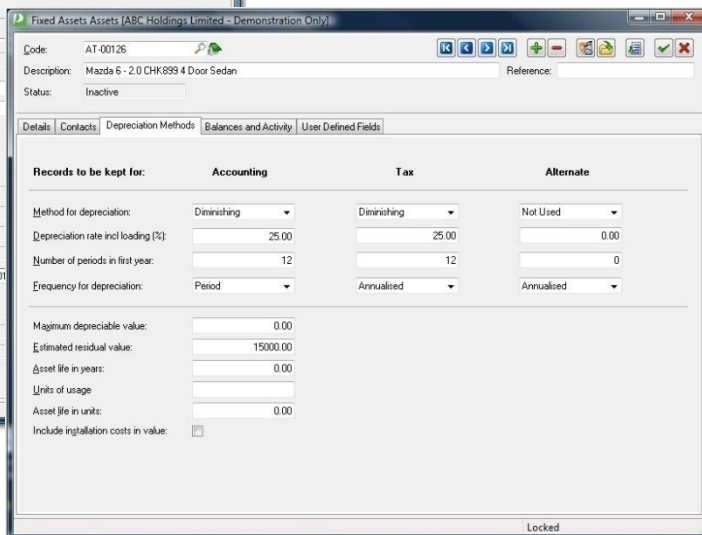
- Manage three separate depreciation calculations i.e. Accounting, Tax and Alternative.
- Automated monthly depreciation run takes away the pain.
- Transfer a batch (detailed or consolidated) directly to the General Ledger.
- Handles partial disposal (through percentage) and then subsequent full disposal.
- Manages depreciation recalculation automatically if the rate is changed.
- Full Audit trail of every financial transaction that occurs.
- Asset Disposal management, correctly manages depreciation reversals where required and calculates the disposal profit and loss.
- Use Data Transfer module to import Assets.
- The Service diary allows you to record details about equipment maintenance.
- Supports auto creation of historic prior period corrections to the General Ledger.
- Automatically removes disposed assets from the register at year end.
- Forecast depreciation expenses for greater budgetary control.

### Asset Management made easy

Keeping things simple is the key, Attaché PRO Fixed Assets allows you to setup your Assets in a simple and intuitive manner. Set the depreciation options once and then forget them.



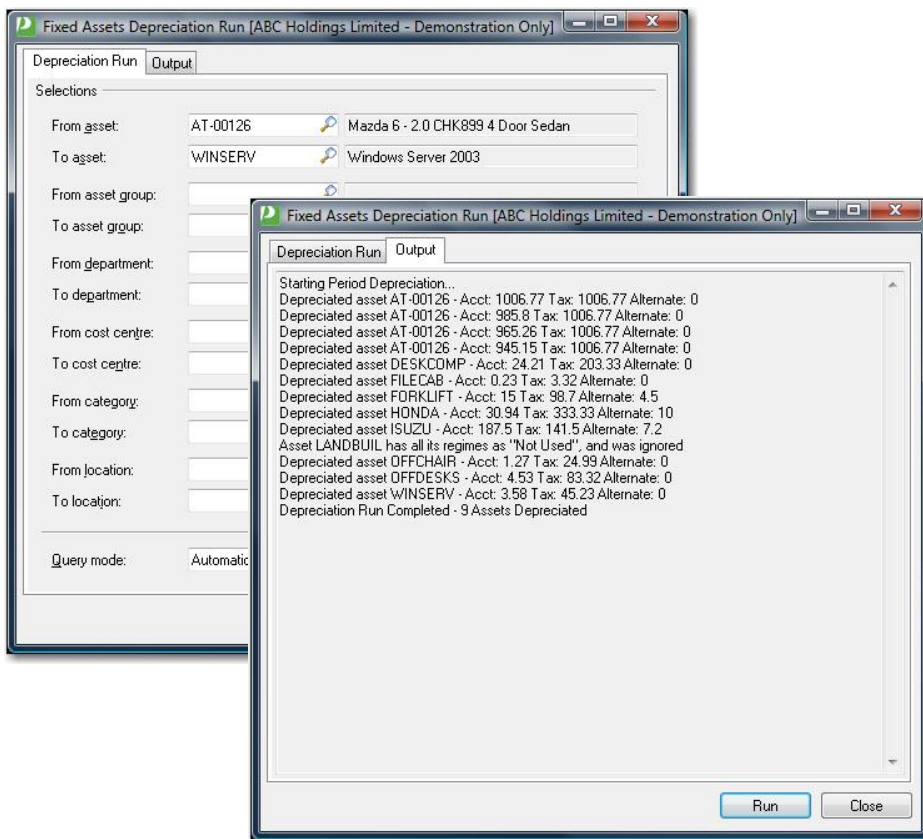
Fixed Asset Maintenance Screen - Details



Fixed Asset Maintenance Screen – Depreciation Methods

## Automated depreciation calculation

Once you have defined a depreciation method for each Asset, calculating the depreciation is as simple as starting the process.



Depreciation run and results screens

## Extensive reporting shows the current value of Assets

It's easy to record details about your Assets in a spreadsheet, and if you are a real wiz you can even work out the depreciation; but real business reporting is a whole other world. With an extensive set of reports that will open up your data to closer scrutiny, choose from:

- Annual Asset Summary
- Asset Category List
- Asset Details
- Asset Group List
- Asset Labels
- Asset Location List
- Asset Replacement
- Asset Summary
- Audit Trail
- Cost Centre List
- Department List
- Depreciation Comparison
- Depreciation Forecast
- Depreciation Schedule
- Service Diary
- Service Type List
- Transaction List (Asset Sequence)
- Transaction List (Trans Sequence)

### Asset management made easy

With simple and clear screens, anyone can manage their Assets themselves. After minimal setup you will be able to use the system to calculate monthly depreciation for accurate accounting figures at the press of a button. Integration with the Attaché PRO General Ledger means that the depreciation is transferred as a batch when you are ready – no more rekeying the depreciation!

General Ledger  
Cashbook  
Accounts Receivable  
Accounts Payable  
Inventory Control  
Special Pricing  
Fixed Assets  
Bill of Materials  
Sales Order Entry  
Sales Analysis  
Purchase Ordering  
Purchase Analysis  
Foreign Currency  
Payroll  
Alex  
Report Designer  
Data Transfer  
FlexiData  
ODBC  
OLE DB  
Archiver  
Scheduling



**Attaché Software New Zealand Pty. Limited**  
Level 5, 93 Grafton Road, Parnell, Auckland  
PO Box 37-623, Parnell, Auckland  
Tel + 64 9 302 9390  
Fax + 64 9 302 9391

**Attaché Software Australia Pty. Limited**  
18 Berry Street, North Sydney NSW 2060  
PO Box 1070, North Sydney NSW 2059  
Tel + 61 2 9929 8700  
Fax + 61 2 9925 0481

Email [sales@attache.co.nz](mailto:sales@attache.co.nz)  
Website [www.attachepro.com](http://www.attachepro.com)