

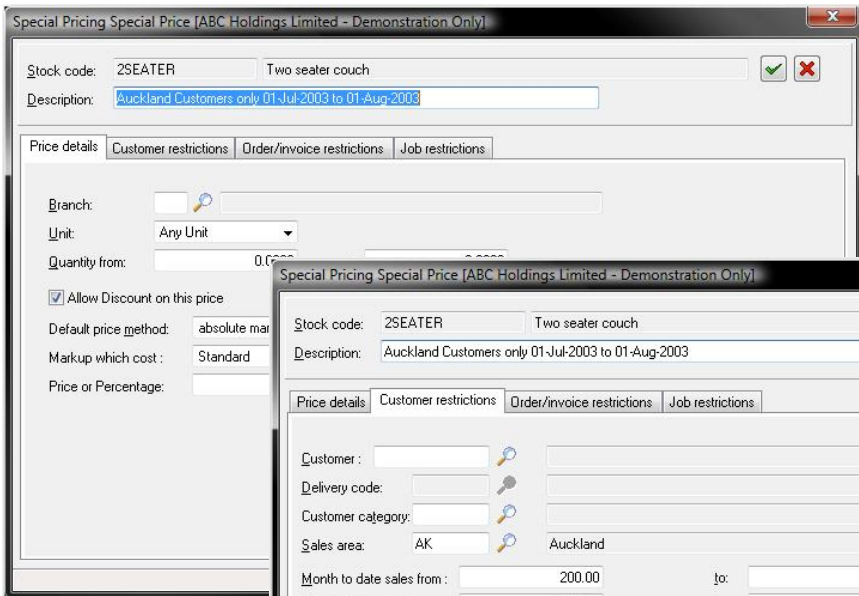
Special Pricing

The Attaché PRO Special Pricing module allows users to offer competitive pricing to their customers, on a number of different criteria. The module supports three main types of special pricing; special prices, contract prices and special discounts. Owners of the Attaché PRO Foreign Currency Module also get foreign selling prices and foreign contract prices.

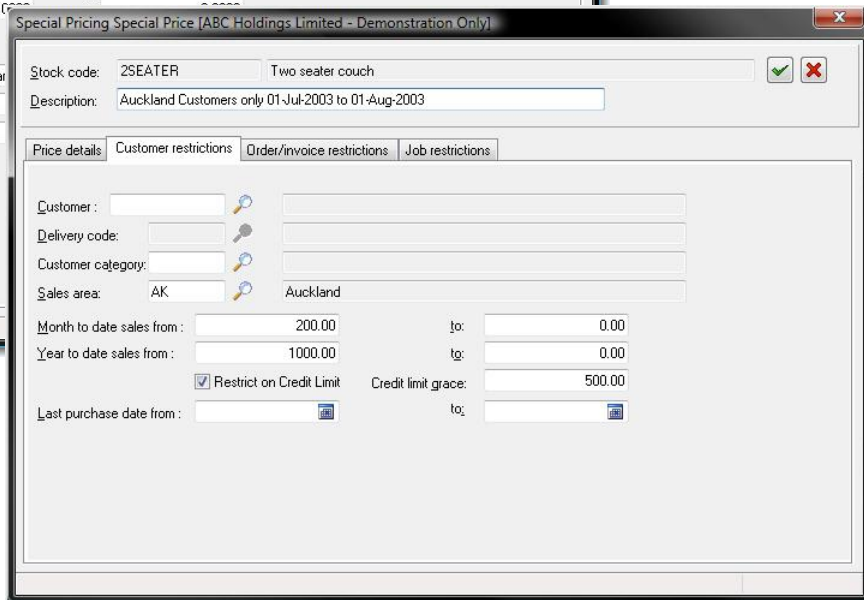
Special prices are used for product lines and can be defined by customer range and / or customer group. For example, a price can be allocated to a certain product, which may then be applied only to customers within a specific sales area, or whose month-to-date sales have exceeded a certain value, or both.

Contract prices are used to set prices per stock item, per customer. Using this facility, each stock item within the system can be sold at a different price to each customer.

Special discounts can be used to set a discount which may be applied to a group or range of customers for a group or range of products.



Special Pricing,
Price details screen



Special Pricing, Customer restrictions screen

Features

- Special prices
- Contract prices
- Special discounts
- Special charges (e.g. freight, insurance and courier charges)
- Best or priority pricing
- Price Restrictions
- Apply by range and / or criteria
- Descriptions for each special price
- Restrictions by credit limit

Pricing Criteria

Prices, discounts and charges are applied by range and by criteria. Date criteria may be applied to special prices, special discount and special charges.

Special prices may be set by customer, delivery code, customer category, sales area, sales person, order date range, order category, invoice category and cost centre.

Contract price restrictions may be set by branch, credit limit, delivery address, order category or invoice category.

Special discount restrictions include all those of special prices (above), and by month / year to date sales value, last purchase value, credit limit, branch, stock code, stock category, product group, purchase group, unit, quantity, orders, invoices and cash sales.

Special charges are accommodated for the automatic calculation of charge values such as freight, insurance and courier charges.

Foreign Currency Integration

Owners of Foreign Currency gain extended contract with the additional of foreign selling prices and foreign contract prices. This is particularly useful where you maintain a separate price for each currency rather than a straight conversion to the foreign amount based on exchange rate.

General Ledger
Cashbook
Accounts Receivable
Accounts Payable
Inventory Control
Special Pricing
Fixed Assets
Bill of Materials
Sales Order Entry
Sales Analysis
Purchase Ordering
Purchase Analysis
Foreign Currency
Payroll
Alex
Report Designer
Data Transfer
FlexiData
ODBC
OLE DB
Archiver
Scheduling

	Prices	Estimated Margin %
Estimated Cost Price:		
Retail:	642.0000	100.00
Corporate:	625.0000	100.00
Wholesale:	512.0000	100.00

Foreign Selling Price - Allows a static foreign price for each currency

Module Integration

The Special Pricing module may be used in conjunction with Inventory Control, Sales (Invoicing).



Attaché Software New Zealand Pty. Limited
Level 5, 93 Grafton Road, Parnell, Auckland
PO Box 37-623, Parnell, Auckland
Tel + 64 9 302 9390
Fax + 64 9 302 9391

Attaché Software Australia Pty. Limited
18 Berry Street, North Sydney NSW 2060
PO Box 1070, North Sydney NSW 2059
Tel + 61 2 9929 8700
Fax + 61 2 9925 0481

Email sales@attache.co.nz
Website www.attachepro.com